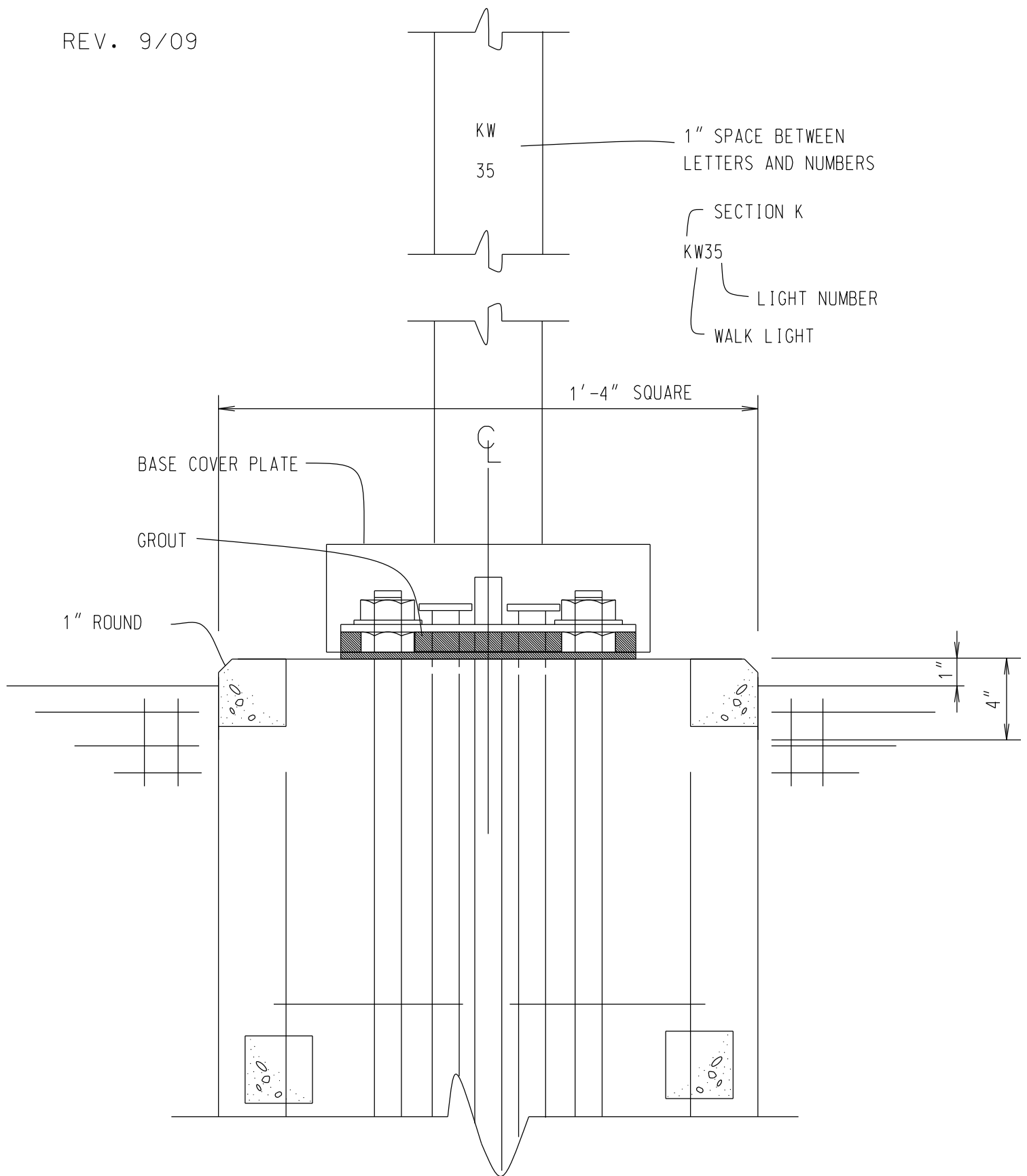


STANDARD PRE-CAST FOUNDATION DETAIL

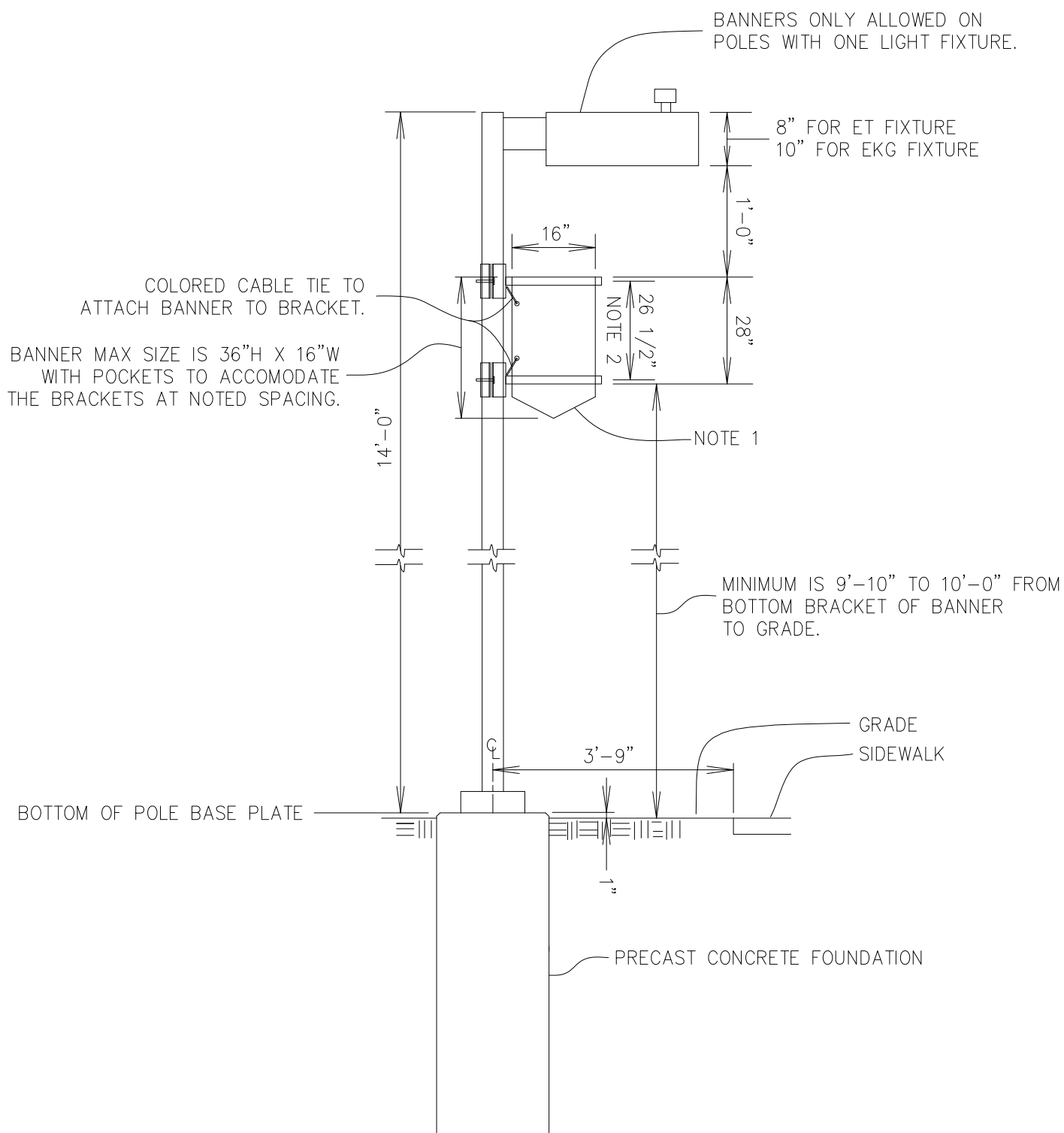
REV. 9/09



DETAIL A

SHEET 2 OF 3

ISU SIDEWALK LIGHTING



NOTES

- 1: BANNER BELOW LOWER BRACKET CANNOT BE RESTRAINED.
- 2: BANNER BRACKET SHAFT IS 1.25" DIA X 18" LONG, CL TO CL DIMENSION BETWEEN THE BRACKETS SHALL BE 26 1/2 INCHES.
- 3: NO OTHER SIGNAGE IS ALLOWED ON POLES WITH BANNERS.

ISU SIDEWALK LIGHT POLE BANNER